

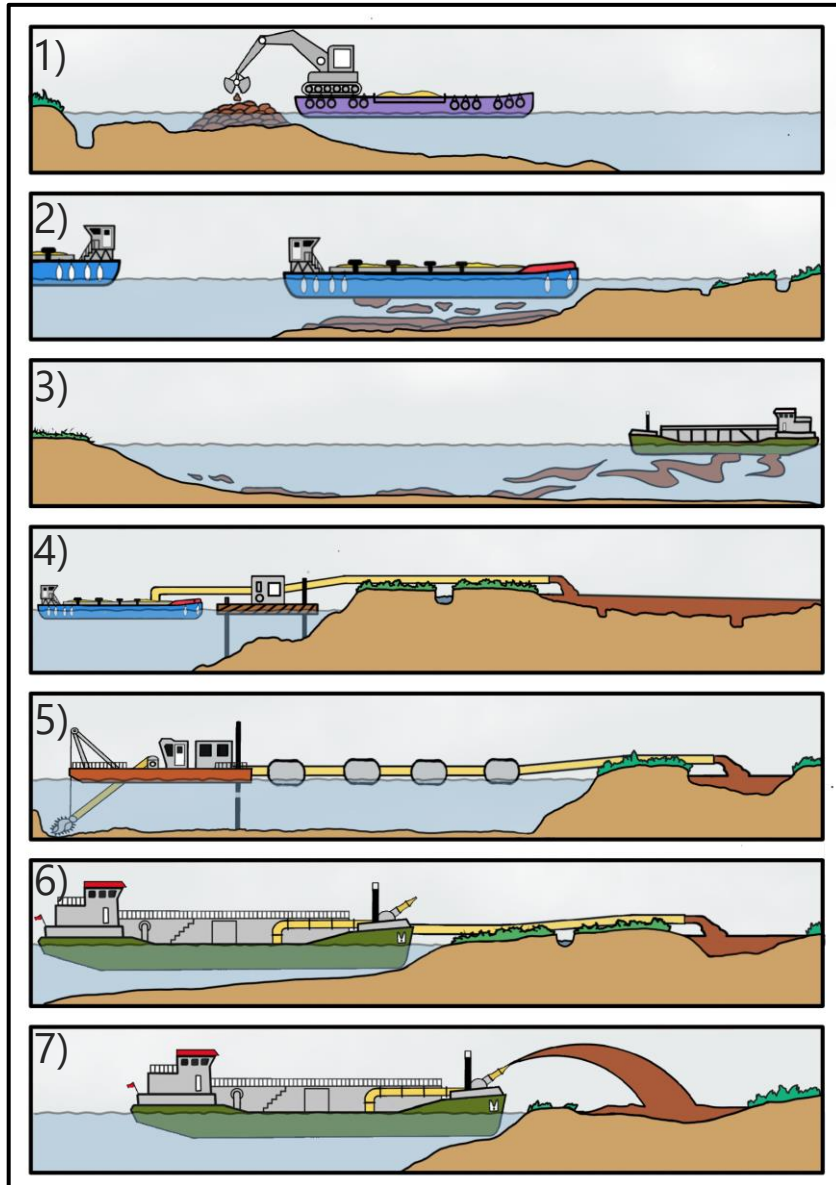
Solent Forum: Natural Environment Group. Online 2 November 2022

Lymington trials and new techniques for restoring saltmarsh using beneficial use of dredgings

Colin Scott



Available methods



1) Very effective but slow and small scale. Value in specific locations (*Woodbridge, Northey*)

2) Effective and efficient. Tide restricted. Doesn't get onto the marsh.. (*Lymington, Lymington Harbour Commissioners*).

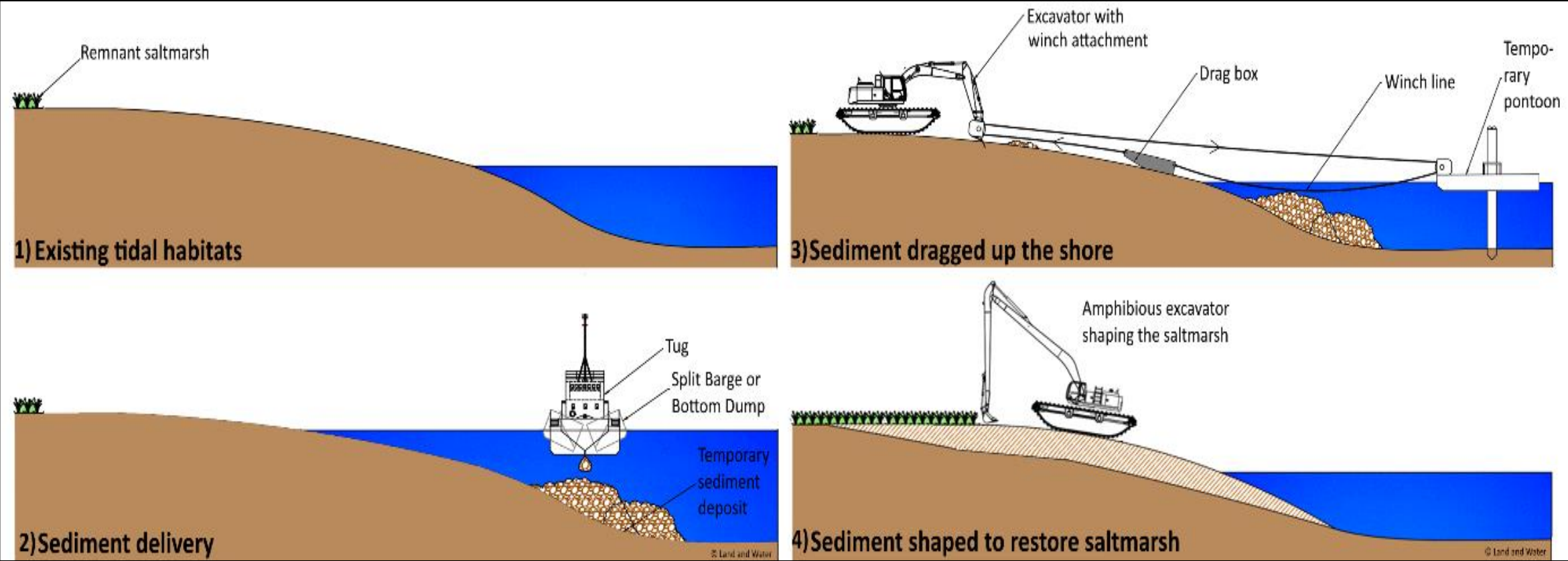
3) Quick and efficient but uncertain benefits pending more research (*Harlingen, Harwich*)

4) Effective and proven but can be costly. Needs sediment retention structures (*Lymington, Wightlink Ltd*),

5) Effective and proven but a little? costly. Needs sediment retention (*Levington Marina; Lymington, Lymington Harbour Commissioners*)

6) + 7) Need deeper water for vessel access (3m) and sediment retention for fine sediment (*Horse Island with fine or coarse sediment*)

Saltmarsh Restoration Drag Box



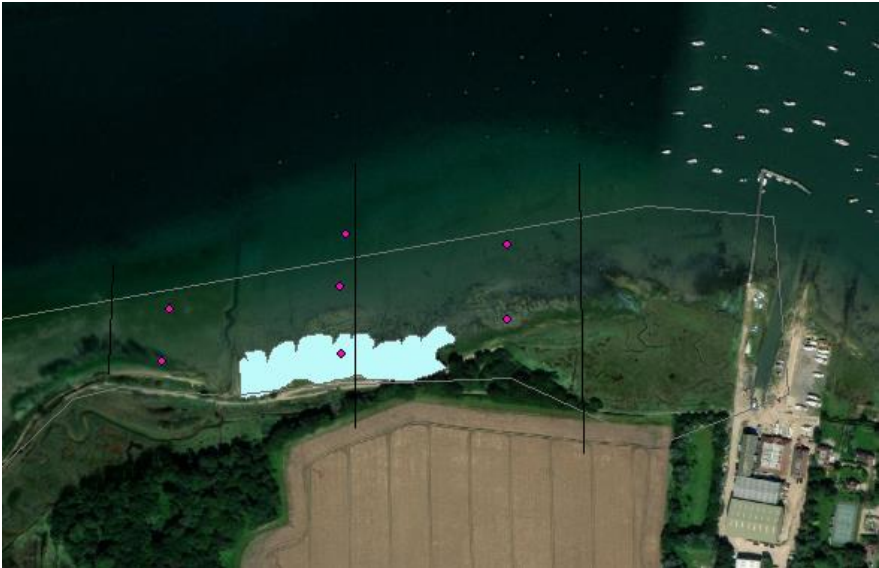
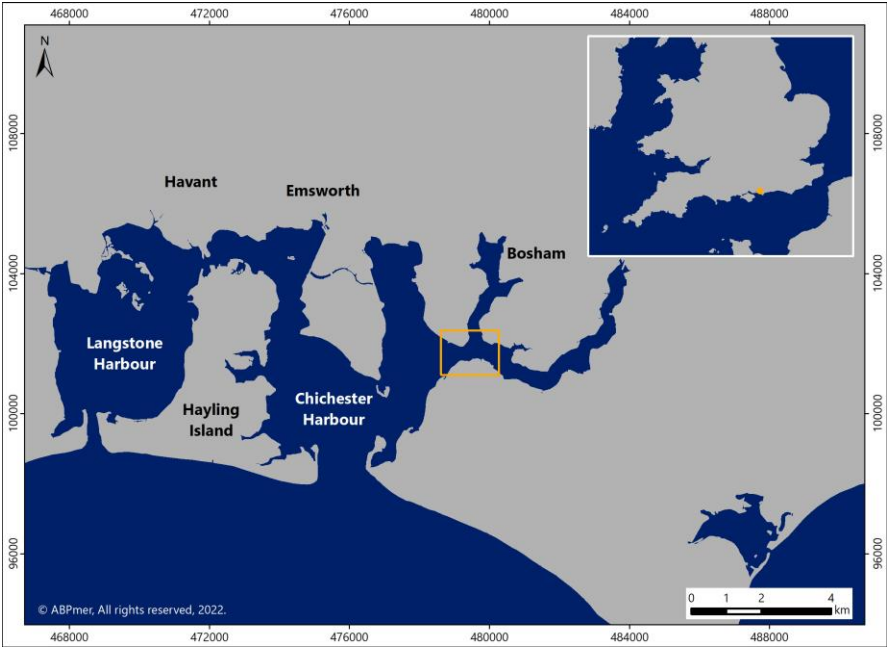
Land and Water Ltd





Land and Water Ltd trials
Environment Agency video

Itchenor



Historic saltmarsh boundaries

— 1946 (approx.)

— 1971 (approx.)

Current saltmarsh

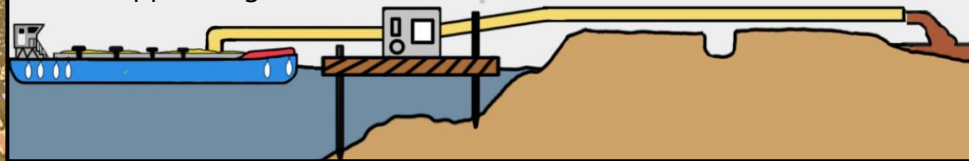
(2016 survey)

© ABPmer, All rights reserved, 2022.
Aerial image: CCO, 2020.
Current Saltmarsh: Environment Agency, 2021.
Historic saltmarsh lines digitised from 2008 Solent Dynamic Coast project (Cope et al., 2008).

Date	By	QA
Jan 22	SRA	CRB
Coordinate System British National Grid		
Projection Transverse Mercator		
Project no: 13705 Fig_sm_hist.mxd		



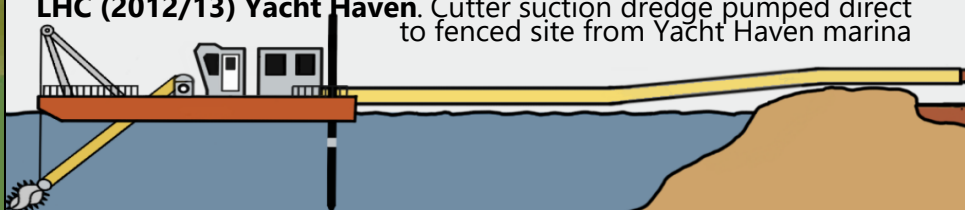
Wightlink Ltd. (2012/13) Boiler Marsh Double handled, pumped from hopper barge to fenced site

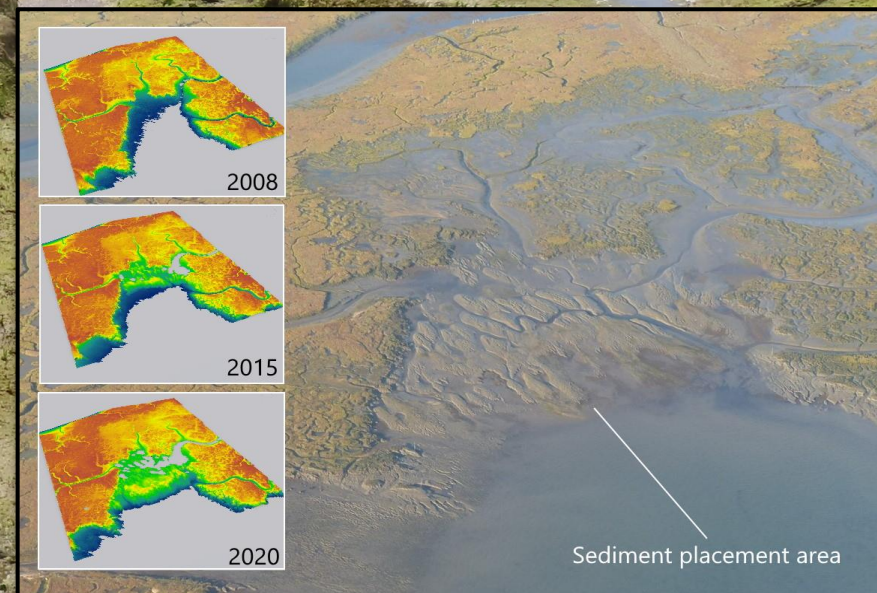
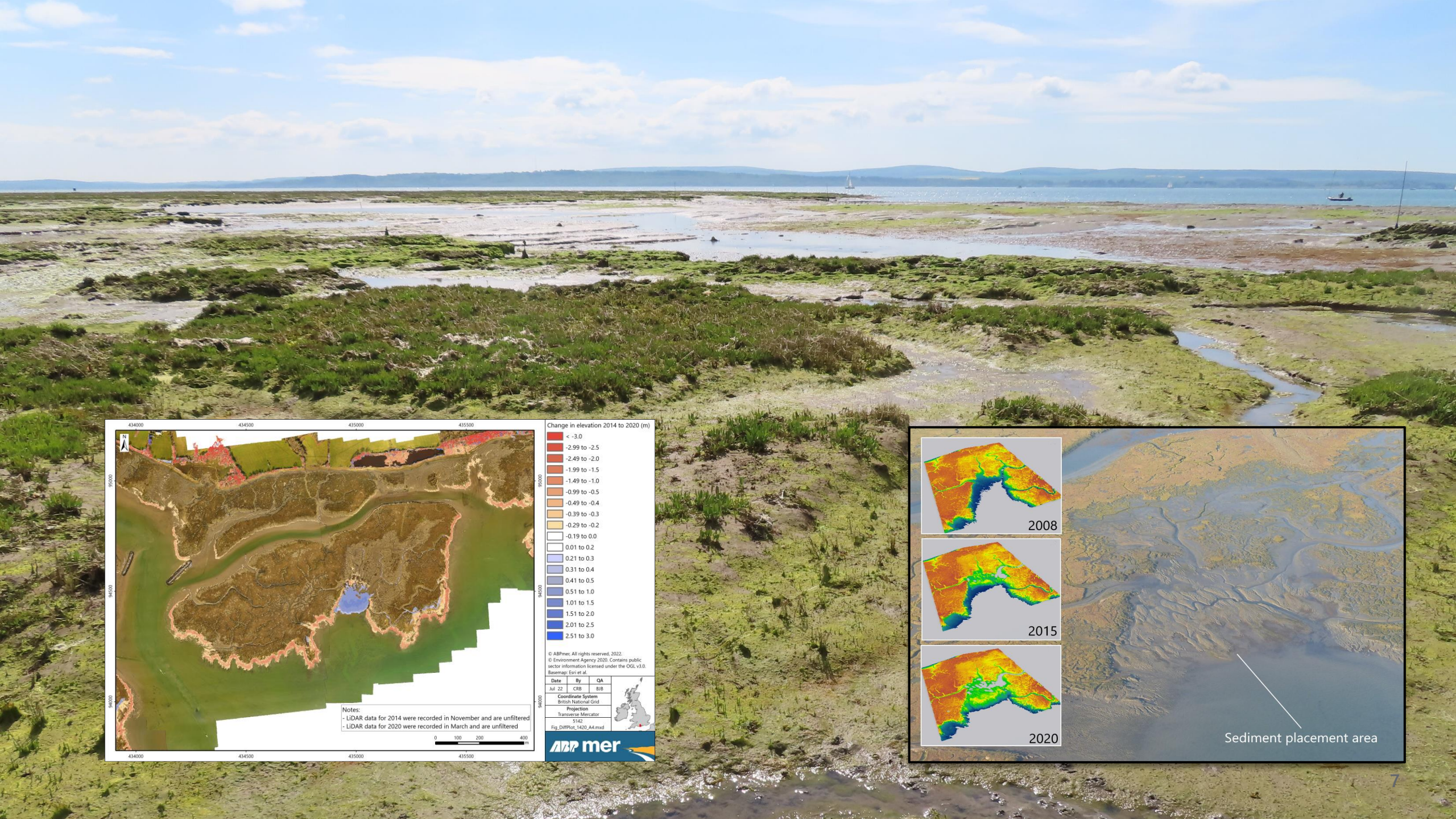


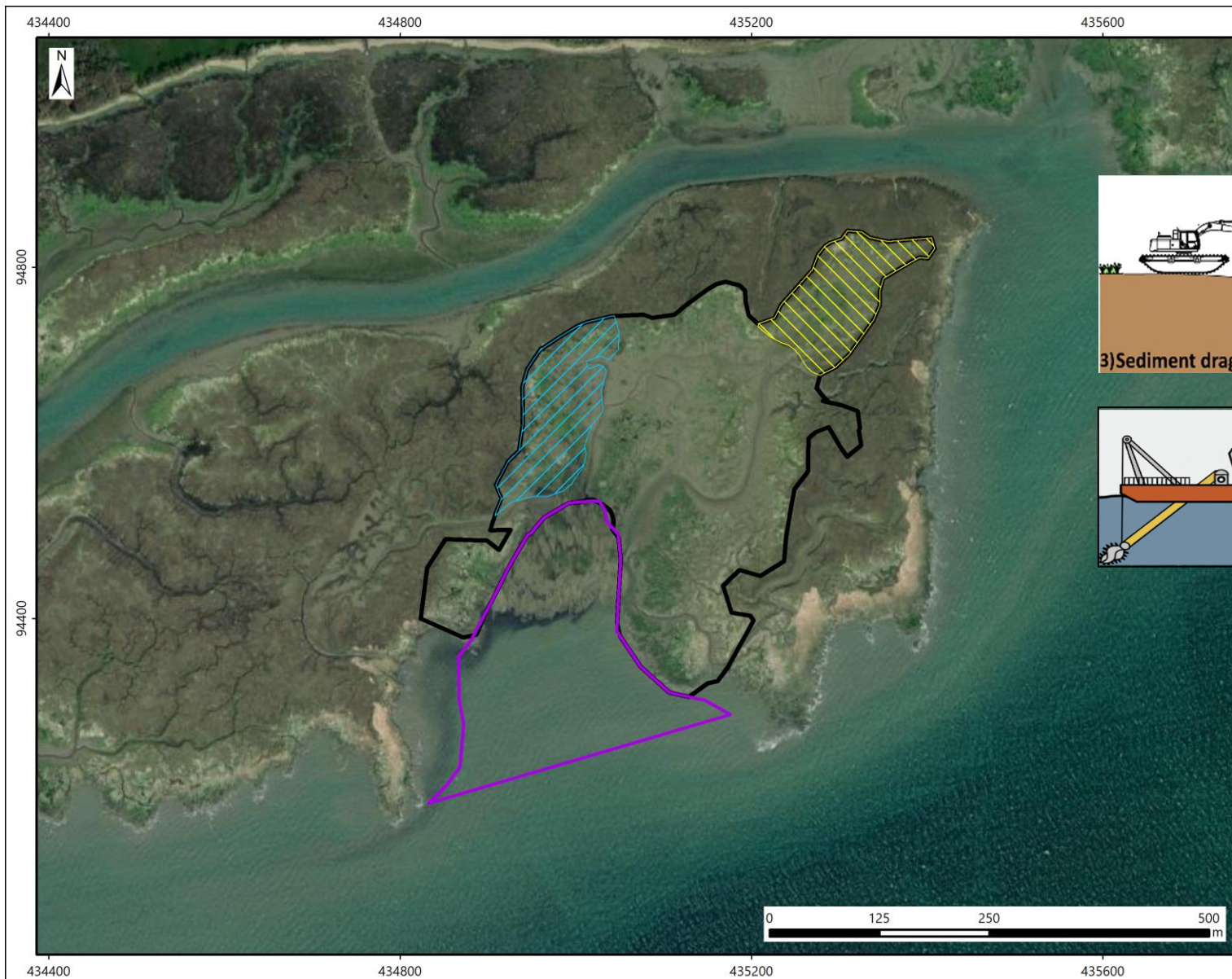
LHC (2014 and ongoing/annual) Boiler Marsh Direct below hull bottom placement from hopper barges



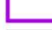



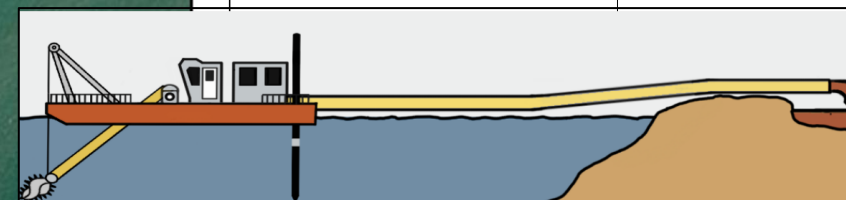
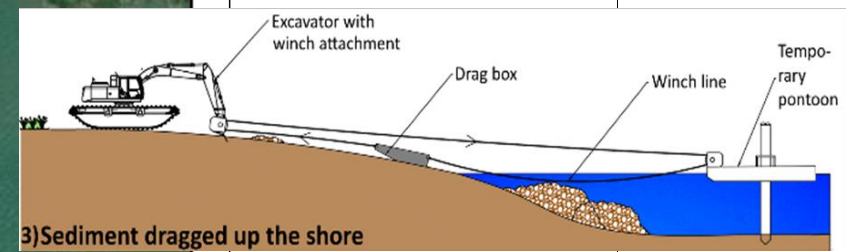
LHC (2012/13) Yacht Haven. Cutter suction dredge pumped direct to fenced site from Yacht Haven marina







-  Potential initial trial area 1
-  Potential initial trial area 2
-  LHC licensed deposit area
-  Full proposed restoration zone



© ABPmer, All rights reserved, 2022.
 Basemap: Esri et al.

Date	By	QA
Jul 22	CRB	NKD

Coordinate System
 British National Grid

Projection
 Transverse Mercator

Project no. 5141
 Fig_Zones_A4.mxd



Thank you for your attention

Colin Scott

crscott@abpmer.co.uk

+44 (0)23 8071 1860

Innovative thinking, sustainable solutions

